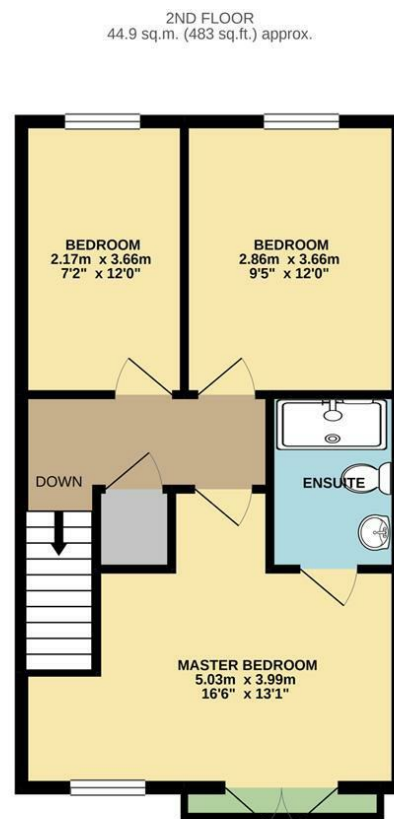
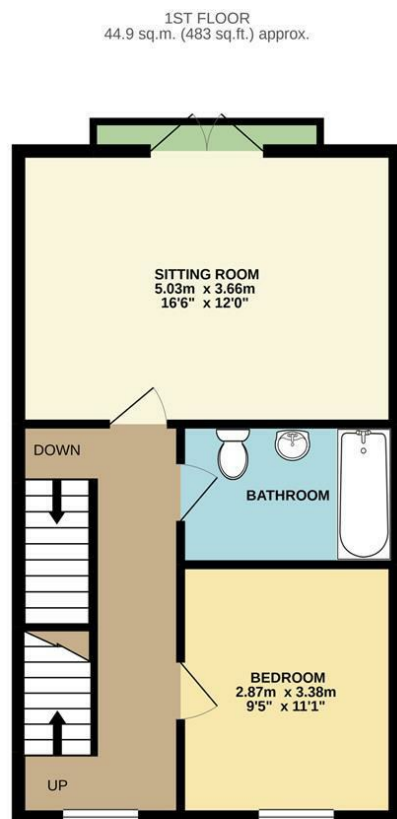
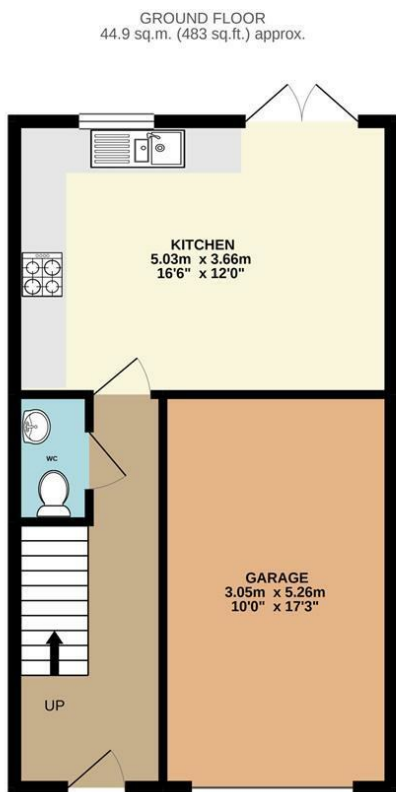




Ron Hill Road | Norwich | NR8  
 Guide £260,000

abbotFox



TOTAL FLOOR AREA : 134.6 sq.m. (1449 sq.ft.) approx.

Whilst every attempt has been made to ensure the accuracy of the floorplan contained here, measurements of doors, windows, rooms and any other items are approximate and no responsibility is taken for any error, omission or mis-statement. This plan is for illustrative purposes only and should be used as such by any prospective purchaser. The services, systems and appliances shown have not been tested and no guarantee as to their operability or efficiency can be given.  
 Made with Metropix ©2021

| Energy Efficiency Rating                    |         |                         |
|---|---------|-------------------------|
|   | Current | Potential               |
| Very energy efficient - lower running costs |         |                         |
| (92 plus) <b>A</b>                          |         |                         |
| (81-91) <b>B</b>                            |         |                         |
| (69-80) <b>C</b>                            |         |                         |
| (55-68) <b>D</b>                            |         |                         |
| (39-54) <b>E</b>                            |         |                         |
| (21-38) <b>F</b>                            |         |                         |
| (1-20) <b>G</b>                             |         |                         |
| Not energy efficient - higher running costs |         |                         |
| <b>England &amp; Wales</b>                  |         | EU Directive 2002/91/EC |

Disclaimer – In accordance with the Property Misdescriptions Act, the company gives notice that all descriptions, references to condition, necessary permissions for use and other details are given in good faith and believed to be correct, but any intending lessees do not rely on them as statements of fact, but must satisfy themselves by inspection or other means, as to their accuracy.



abbotFox presents this stylish, end terraced townhouse. Located within the popular Queens Hills development of Costessey, this is an ideal opportunity for any growing family. With accommodation over three floors, this home has been exceptionally well maintained by the current owners since its construction. With the ground floor offering an inviting entrance hall, cloakroom and kitchen diner, the first floor comprises of a spacious lounge, double bedroom and family bathroom. The top floor provides three further bedrooms, with an ensuite shower room the master. Externally, the frontage offers ample off road parking and a spacious carport, with the low maintenance rear garden affording a high degree of privacy. An internal viewing comes highly recommended.

